

MINEX DRILL



www.minexdrill.com

MINEX DRILL

It was established in 2015 to provide professional service to the mining sector with its knowledge, experience and expertise. Its aim is to use machinery and equipment suitable for today's technology to maximize efficiency with more economical projects and its high-quality and professional staff. It carries out its projects by adopting principles on health, work safety and environment.

MINEX DRILL operates to achieve its goals

Responsible for successfully completing the project to high standards. It attaches great importance to the development of society and lifestyle in the region where it operates and to maintaining respectful relations with local employees.

Our main goals are;

- >Customer-oriented and trust-based quality service,
- >Continuous increase in efficiency in technical and management services provided,
- >Increasing work safety and zero accidents,
- >Environmentally sensitive work and planning,
- >Development and establishment of cooperation and teamwork,
- >Establishment of high efficiency and quality awareness,
- >The goal of reaching more beautiful and perfect.



LOW COST HIGH EFFICIENCY

WHERE ARE WE IN THE WORLD?



Core

Core drilling provides critical information in many areas such as geology, mining, engineering and ground surveys. Core samples enable detailed analysis of geological structures in the field.

MINEX DRILL is committed to keeping core drilling efficiency at the highest level in national and international standards.





Minex Drill



www.minexdrill.com

Our Commitment to Quality

>As **MINEX DRILL**, we prioritize employer satisfaction and strive to fulfill our customers' diverse demands promptly and impeccably with our advanced, modern, and state-of-the-art machinery. Our objective is to deliver essential services through our experienced team within the evolving and expanding business landscape, positioning ourselves among the industry's leaders. **MINEX DRILL**'s policy is to structure and execute our operations with a focus on customer satisfaction. We are confident that this commitment will foster quality and trust.

Vision

>We are an innovative and continually evolving organization that leverages all technological advancements within our sector. We deliver reliable, employer-focused, and high-quality services, uphold the rights of both employers and employees, and cultivate a skilled workforce in the industry.

Mission

>Our objective is to establish ourselves as a recognized organization capable of delivering reliable and high-quality services across all sectors in which we operate, leveraging our professionalism and collaborative efforts.

Our tenets

- > Diversity,
- > Open-mindedness,
- > Mutual respect,
- > Clear goals,
- > Determination,
- > Leadership; are our corporate principles.

Client Contentment

>Customer satisfaction regarding the services we offer reflects our level of professionalism. We deliver quality, reliable, healthy, and timely services to ensure customer satisfaction.

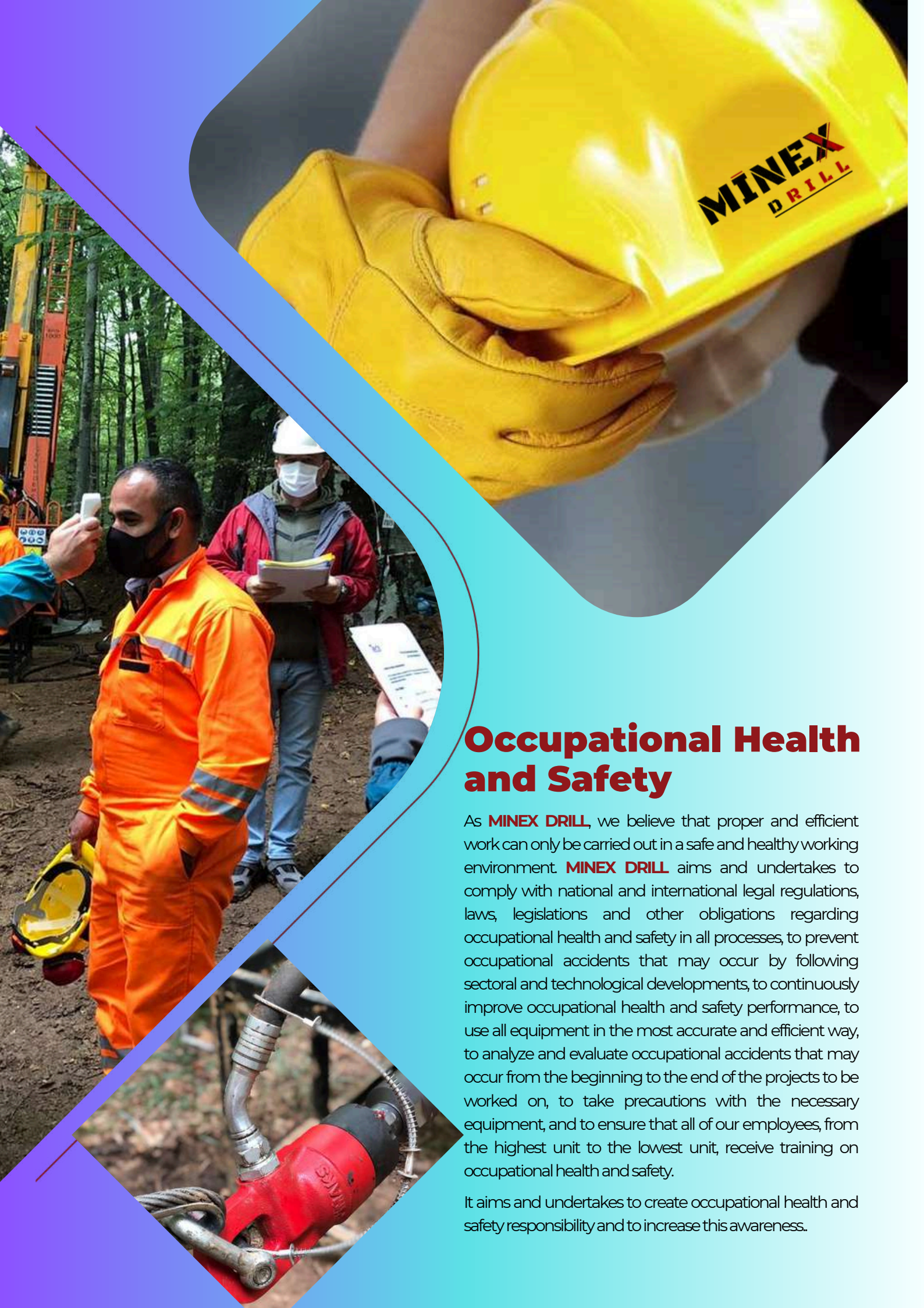
Employee Engagement

>We emphasize to our employees that the primary contributor to success is teamwork and remind them that they are integral members of this team.



WE ARE BUILDING TOMORROW FROM TODAY WITH
THE CONSCIOUSNESS OF OUR RESPONSIBILITY





Occupational Health and Safety

As **MINEX DRILL**, we believe that proper and efficient work can only be carried out in a safe and healthy working environment. **MINEX DRILL** aims and undertakes to comply with national and international legal regulations, laws, legislations and other obligations regarding occupational health and safety in all processes, to prevent occupational accidents that may occur by following sectoral and technological developments, to continuously improve occupational health and safety performance, to use all equipment in the most accurate and efficient way, to analyze and evaluate occupational accidents that may occur from the beginning to the end of the projects to be worked on, to take precautions with the necessary equipment, and to ensure that all of our employees, from the highest unit to the lowest unit, receive training on occupational health and safety.

It aims and undertakes to create occupational health and safety responsibility and to increase this awareness.

MINEX
DRILL

We are at your service with our machines equipped with the latest technology.





Environment

As **MINEX DRILL**, based on sustainable development and environmental protection concepts, in all processes, we aim and undertake to:

- > with national and international legal regulations, environmental laws, legislation and other obligations,
- > Follow sectoral, scientific research and technological developments on the environment, prevent environmental pollution and continuously improve environmental performance,
- > Protect natural resources and use them in the most efficient way,
- > Keep under control and reduce environmental impacts that occur and may occur in projects from the beginning to the end,
- > Reduce or recycle wastes that will occur during the works as much as possible,
- > Increase the environmental responsibility awareness of all our employees from the highest to the lowest units by providing environmental training to all our employees.



Our Offerings

The primary philosophy of our drilling team, composed of experienced and committed drillers at **MINEX DRILL**, is:

- > Excellence,
- > Eco-friendly,
- > In a manner that facilitates the employer in attaining their objectives to deliver drilling services in collaboration with the employer.

MINEX DRILL core; RC; reverse circulation and multi-functional drilling machines is providing.

- > Wireline Surface Core Drilling
- > Wireline Underground Core Drilling
- > Air and Mud Rotary Drilling
- > Conventional Core Drilling
- > Reverse Circulation (RC) Drilling
- > RAB Drilling
- > Rapid Drilling for Grade Control



Sertifika

CERTIFICATE

MİNEX DRILL MÜHENDİSLİK SONDAJ
SANAYİ VE TİCARET ANONİM ŞİRKETİ

OSTİM OSB MAH. 1125/2 SK. NO: 10 YENİMAHALLE/ANKARA/TÜRKİYE

ISO 45001:2018

Kapsam/Scope

SONDAJ EKİPMANLARI VE YEDEK PARÇALARININ SATIŞI, SONDAJ VE
MÜHENDİSLİK HİZMETLERİ

SALES OF DRILLING EQUIPMENT AND SPARE PARTS, DRILLING AND
ENGINEERING SERVICES

EA : 2-28-29-34

Be sertifika ile yukarıda adı geçen kuruluşa İş Sağlığı ve Güvenliği Yönetim Sistemi gereklilikleri karşılandığı tasdik olunur.
This is to certify that the above mentioned company meets the requirement of Occupational Health & Safety Management System.

Sertifika No / Certificate Number : MTS-41058
Başlangıç Tarihi / Date of Initial Reg. : 11.11.2024
Batacık Tarihi / Date of Certificate : 11.11.2024
Geçerlilik Tarihi / Date of Expiry : 10.11.2025
Revizyon / Revision : 000

Be sertifika kuruluşa belgelendirme performansını gösteren ve yolda ve on 1 her yıl yenilemek zorunda olan bir gösterge belgesidir.
Bu belge geçerli olduğu sürece sertifikasyon kuruluşuna karşı tutulmalıdır.

This certificate is valid until the end of the three-year certification period of the organization complies with the certification requirements and the certificate is able to be carried out at least once a year as completed successfully.

[Signature]
Genel Müdür / General Manager



SİGEMCERT HİZMETLERİ BELGELENDİRME EĞİTİM VE TEST HİZMETLERİ LTD. ŞTİ.
© Başpazarı Mahallesi Saray Bulvarı İşyeri İşyeri No: 10/25 Yenimahalle/Ankara
@ www.sigemcert.com.tr @ belgelendirme@sigemcert.com.tr @ 44 362 365 08 65
Y.Y.F.R. 129 Revizyon 18.09.2024



Sertifika

CERTIFICATE

MİNEX DRILL MÜHENDİSLİK SONDAJ
SANAYİ VE TİCARET ANONİM ŞİRKETİ

OSTİM OSB MAH. 1125/2 SK. NO: 10 YENİMAHALLE/ANKARA/TÜRKİYE

ISO 14001:2015

Kapsam/Scope

SONDAJ EKİPMANLARI VE YEDEK PARÇALARININ SATIŞI, SONDAJ VE
MÜHENDİSLİK HİZMETLERİ

SALES OF DRILLING EQUIPMENT AND SPARE PARTS, DRILLING AND
ENGINEERING SERVICES

EA : 2-28-29-34

Be sertifika ile yukarıda adı geçen kuruluşa Çevre Yönetim Sistemi gereklilikleri karşılandığı tasdik olunur.
This is to certify that the above mentioned company meets the requirement of Environmental Management System.

Sertifika No / Certificate Number : MTS-41057
Başlangıç Tarihi / Date of Initial Reg. : 11.11.2024
Batacık Tarihi / Date of Certificate : 11.11.2024
Geçerlilik Tarihi / Date of Expiry : 10.11.2025
Revizyon / Revision : 000

Be sertifika kuruluşa belgelendirme performansını gösteren ve yolda ve on 1 her yıl yenilemek zorunda olan bir gösterge belgesidir.
Bu belge geçerli olduğu sürece sertifikasyon kuruluşuna karşı tutulmalıdır.

This certificate is valid until the end of the three-year certification period of the organization complies with the certification requirements and the certificate is able to be carried out at least once a year as completed successfully.

[Signature]
Genel Müdür / General Manager



SİGEMCERT HİZMETLERİ BELGELENDİRME EĞİTİM VE TEST HİZMETLERİ LTD. ŞTİ.
© Başpazarı Mahallesi Saray Bulvarı İşyeri İşyeri No: 10/25 Yenimahalle/Ankara
@ www.sigemcert.com.tr @ belgelendirme@sigemcert.com.tr @ 44 362 365 08 65
Y.Y.F.R. 129 Revizyon 18.09.2024



Sertifika

CERTIFICATE

MİNEX DRILL MÜHENDİSLİK SONDAJ
SANAYİ VE TİCARET ANONİM ŞİRKETİ

OSTİM OSB MAH. 1125/2 SK. NO: 10 YENİMAHALLE/ANKARA/TÜRKİYE

ISO 9001:2015

Kapsam/Scope

SONDAJ EKİPMANLARI VE YEDEK PARÇALARININ SATIŞI, SONDAJ VE
MÜHENDİSLİK HİZMETLERİ

SALES OF DRILLING EQUIPMENT AND SPARE PARTS, DRILLING AND
ENGINEERING SERVICES

EA : 2-28-29-34

Be sertifika ile yukarıda adı geçen kuruluşa Kalite Yönetim Sistemi gereklilikleri karşılandığı tasdik olunur.
This is to certify that the above mentioned company meets the requirement of Quality Management System.

Sertifika No / Certificate Number : MTS-41056
Başlangıç Tarihi / Date of Initial Reg. : 11.11.2024
Batacık Tarihi / Date of Certificate : 11.11.2024
Geçerlilik Tarihi / Date of Expiry : 10.11.2025
Revizyon / Revision : 000

Be sertifika kuruluşa belgelendirme performansını gösteren ve yolda ve on 1 her yıl yenilemek zorunda olan bir gösterge belgesidir.
Bu belge geçerli olduğu sürece sertifikasyon kuruluşuna karşı tutulmalıdır.

This certificate is valid until the end of the three-year certification period of the organization complies with the certification requirements and the certificate is able to be carried out at least once a year as completed successfully.

[Signature]
Genel Müdür / General Manager



SİGEMCERT HİZMETLERİ BELGELENDİRME EĞİTİM VE TEST HİZMETLERİ LTD. ŞTİ.
© Başpazarı Mahallesi Saray Bulvarı İşyeri İşyeri No: 10/25 Yenimahalle/Ankara
@ www.sigemcert.com.tr @ belgelendirme@sigemcert.com.tr @ 44 362 365 08 65
Y.Y.F.R. 129 Revizyon 18.09.2024

MULTIPURPOSE



MRC 1200 M

TECHNICAL SPECIFICATIONS

| | | | | | |
|--------------|---------|------|------|------|------|
| Drill Angle | 45°-90° | | | | RC-M |
| Rod Diameter | PWL | HWL | NWL | BWL | 5" |
| Depth (m) | 650 | 1000 | 1550 | 2050 | 400 |
| Depth (ft) | 2132 | 3280 | 5084 | 6724 | 1312 |

RC-REVERSE CIRCULATION DRILLING

MDC 500

Due to its compact design and telescopic tower, it is capable of delivering enhanced capacity core drilling services in forested and confined environments. It is mounted on a pallet for transportation across challenging terrain.

TECHNICAL SPECIFICATIONS

| | | | | |
|--------------|---------|------|------|------|
| Drill Angle | 45°-90° | | | |
| Rod Diameter | PWL | HWL | NWL | BWL |
| Depth(m) | 650 | 1000 | 1550 | 2050 |
| Depth(ft) | 2132 | 3280 | 5084 | 6724 |



MDC 2500

TECHNICAL SPECIFICATIONS

| | | | | |
|--------------|--------|------|------|------|
| Drill Angle | 45°-90 | | | |
| Rod Diameter | BWL | NWL | HWL | PWL |
| Depth(m) | 3000 | 2500 | 1900 | 1000 |
| Depth(ft) | 9842 | 8202 | 6233 | 3280 |

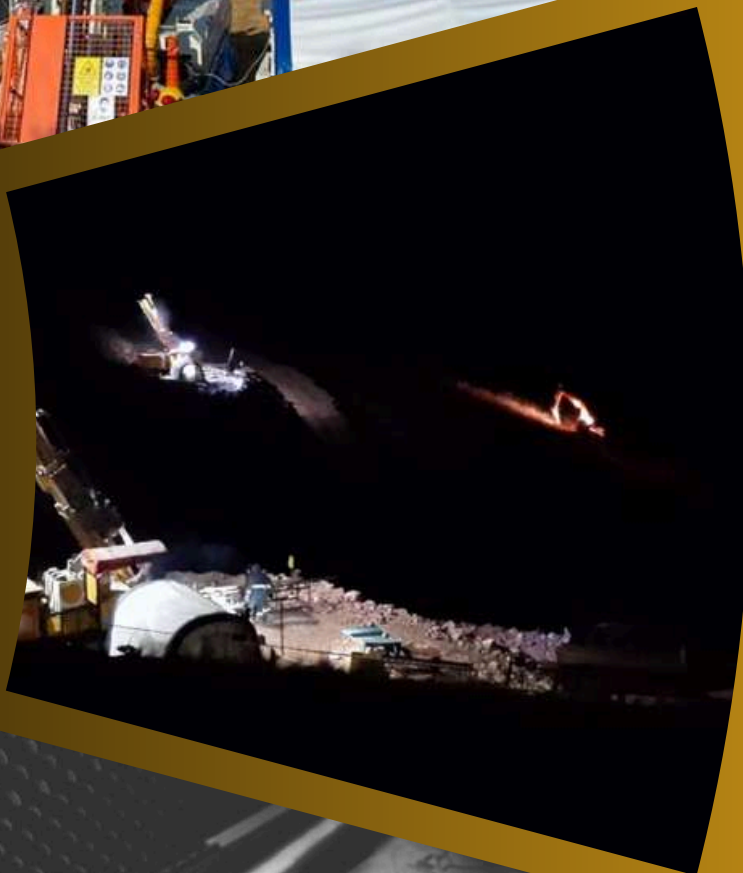


MDC 1000

TECHNICAL SPECIFICATIONS

| | | | | |
|--------------|--------|------|------|------|
| Drill Angle | 45°-90 | | | |
| Rod Diameter | BWL | NWL | HWL | PWL |
| Depth(m) | 3000 | 2500 | 1900 | 1000 |
| Depth(ft) | 9842 | 8202 | 6233 | 3280 |

MİNEX
2025
DRILL



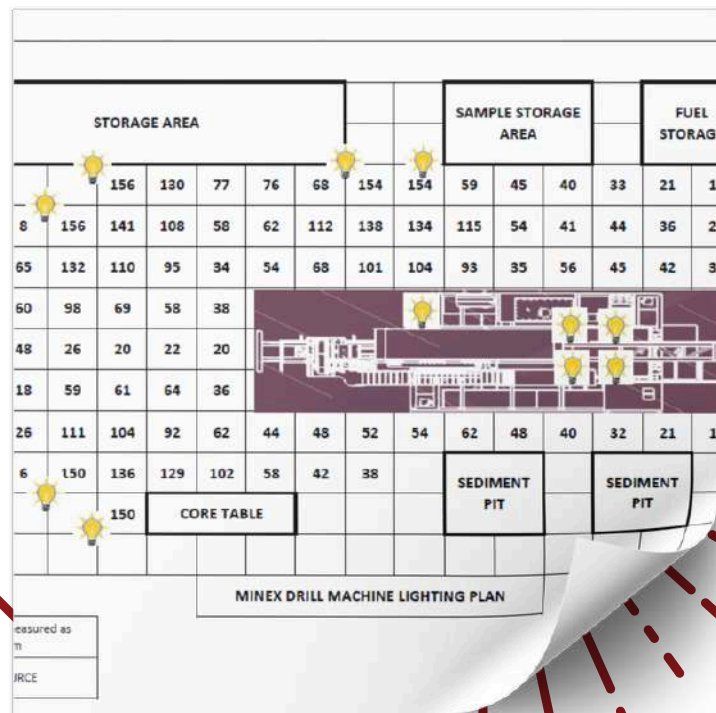
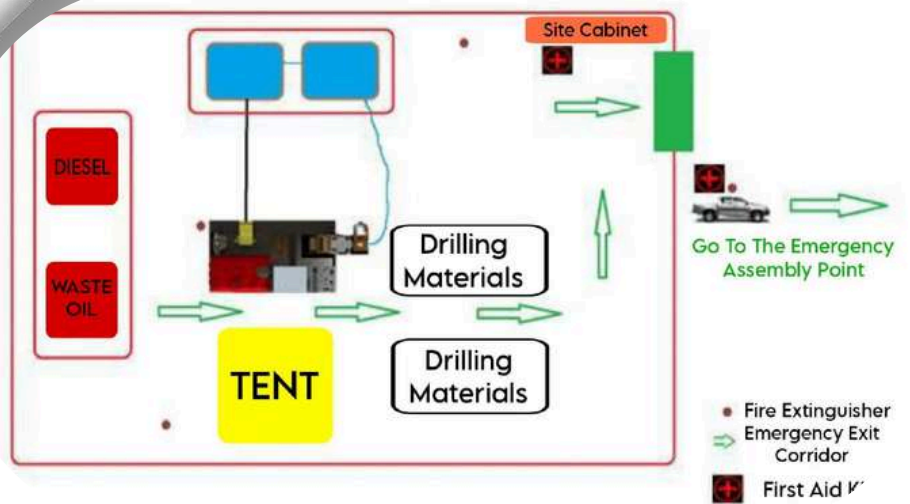
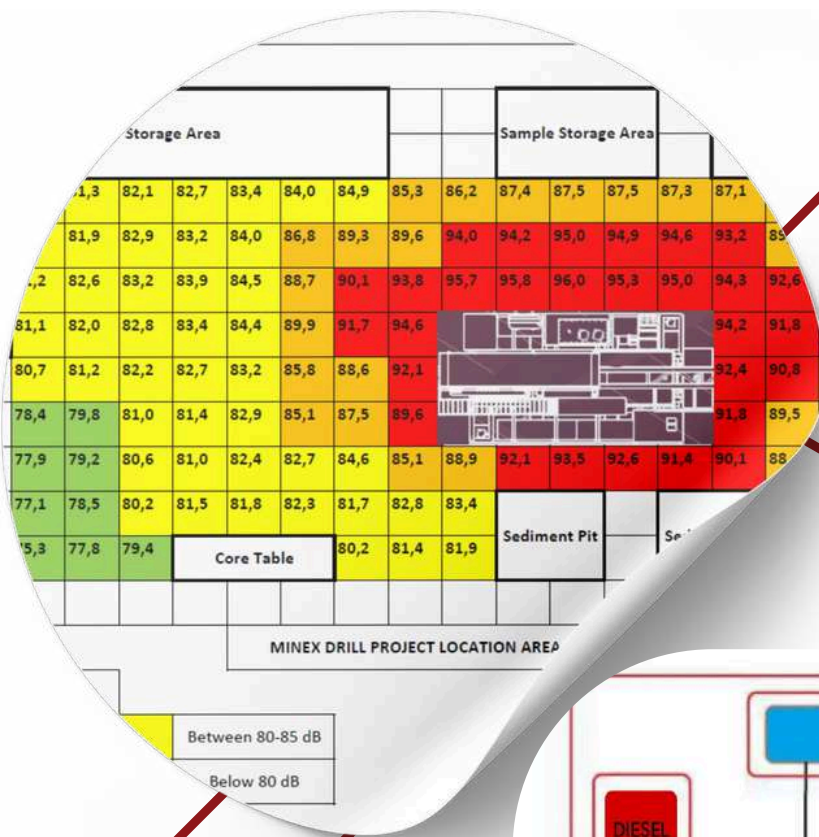


From our 1104 m deep well



MINEX
DRILL

We explore the potential...



safety first

MINEX
DRILL



RC & DIAMOND CORE DRILLING SERVICES

Minimum 100,000 meters of borehole drilling per year

www.minexdrill.com

MINEX DRILL

THINGS TO CONSIDER IN DRILLING OPERATIONS

HANDBOOK

MINEX-001-01

• Equipment and materials belonging to the drilling machine should be checked at a safe distance and in an orderly, appropriate manner.

MINEX-002-01

• Barbed and liquid chemicals used in mining operations should be stored in a sturdy manner without violating the work area.

MINEX-003-01

• The stacked materials and equipment should be easily accessible and have a comfortable working area.

MINEX-004-01

• Barbed and liquid chemicals used in mining operations should be stored in a sturdy manner without violating the work area.

MINEX-005-01

• The stacked materials and equipment should be easily accessible and have a comfortable working area.

MINEX-006-01

• The stacked materials and equipment should be easily accessible and have a comfortable working area.

MINEX-007-01

| MINEX DRILL | |
|----------------|--|
| DATE | |
| NAME | |
| ADDRESS | |
| PHONE | |
| E-MAIL | |
| WEBSITE | |
| ADDRESS | |
| PHONE | |
| E-MAIL | |
| WEBSITE | |

MINEX-008-01

• Barbed and liquid chemicals used in mining operations should be stored in a sturdy manner without violating the work area.

MINEX-009-01

• The stacked materials and equipment should be easily accessible and have a comfortable working area.

MINEX-010-01

• The stacked materials and equipment should be easily accessible and have a comfortable working area.

MINEX-011-01

• The stacked materials and equipment should be easily accessible and have a comfortable working area.

MINEX-012-01

• The stacked materials and equipment should be easily accessible and have a comfortable working area.

MINEX-013-01

• The stacked materials and equipment should be easily accessible and have a comfortable working area.

MINEX-014-01

THE HAZARDOUS IN THE OPERATIONS - YOUR RESPONSIBILITY

Drilling operations are a great importance in mining. The more safety and security your services are taken and observed in your teams, the more it is evident that the work you are doing is high quality and trustworthy. The job teams serve as a professional for you and your team.

Therefore, even though your work may appear to be simple, you are always engaged in one of the most important tasks in mining. Recognize the value you and your team bring to the industry of your country, and work with them to make it a better place.

Address the problem of "DRILLING ACCIDENTS" as there are a lot of accidents in the world, which are not always related to the work itself, but to the way you work. Therefore, if you need further assistance, feel free to ask!

MINEX-015-01

• Barbed and liquid chemicals used in mining operations should be stored in a sturdy manner without violating the work area.

MINEX-016-01

• The stacked materials and equipment should be easily accessible and have a comfortable working area.

MINEX-017-01

• The stacked materials and equipment should be easily accessible and have a comfortable working area.

MINEX-018-01

• The stacked materials and equipment should be easily accessible and have a comfortable working area.

MINEX-019-01

• The stacked materials and equipment should be easily accessible and have a comfortable working area.

MINEX-020-01

• The stacked materials and equipment should be easily accessible and have a comfortable working area.

MINEX-021-01

SAFETY RULES

• Do not enter the machine during work.

• Ensure that there are no obstacles in front of the machine when it is in motion. The drill machine should not be driven and the drill should not be used until the machine and the drill are in a safe position and there is a safe, clear path.

• If you have any doubts or questions, ask your supervisor.

• Do not use the machine and the drill in a way that is not intended for use. The machine and the drill are designed for use in a safe and secure manner.

MINEX-022-01

• Barbed and liquid chemicals used in mining operations should be stored in a sturdy manner without violating the work area.

MINEX-023-01

• The stacked materials and equipment should be easily accessible and have a comfortable working area.

MINEX-024-01

• The stacked materials and equipment should be easily accessible and have a comfortable working area.

MINEX-025-01

• The stacked materials and equipment should be easily accessible and have a comfortable working area.

MINEX-026-01

• The stacked materials and equipment should be easily accessible and have a comfortable working area.

MINEX-027-01

• The stacked materials and equipment should be easily accessible and have a comfortable working area.

MINEX-028-01

SAFETY RULES

• Do not enter the machine during work.

• Ensure that there are no obstacles in front of the machine when it is in motion. The drill machine should not be driven and the drill should not be used until the machine and the drill are in a safe position and there is a safe, clear path.

• If you have any doubts or questions, ask your supervisor.

• Do not use the machine and the drill in a way that is not intended for use. The machine and the drill are designed for use in a safe and secure manner.

MINEX-029-01

• Barbed and liquid chemicals used in mining operations should be stored in a sturdy manner without violating the work area.

MINEX-030-01

• The stacked materials and equipment should be easily accessible and have a comfortable working area.

MINEX-031-01

• The stacked materials and equipment should be easily accessible and have a comfortable working area.

MINEX-032-01

• The stacked materials and equipment should be easily accessible and have a comfortable working area.

MINEX-033-01

• The stacked materials and equipment should be easily accessible and have a comfortable working area.

MINEX-034-01

• The stacked materials and equipment should be easily accessible and have a comfortable working area.

MINEX-035-01

SAFETY RULES

• Do not enter the machine during work.

• Ensure that there are no obstacles in front of the machine when it is in motion. The drill machine should not be driven and the drill should not be used until the machine and the drill are in a safe position and there is a safe, clear path.

• If you have any doubts or questions, ask your supervisor.

• Do not use the machine and the drill in a way that is not intended for use. The machine and the drill are designed for use in a safe and secure manner.

MINEX-036-01

• Barbed and liquid chemicals used in mining operations should be stored in a sturdy manner without violating the work area.

MINEX-037-01

• The stacked materials and equipment should be easily accessible and have a comfortable working area.

MINEX-038-01

• The stacked materials and equipment should be easily accessible and have a comfortable working area.

MINEX-039-01

• The stacked materials and equipment should be easily accessible and have a comfortable working area.

MINEX-040-01

• The stacked materials and equipment should be easily accessible and have a comfortable working area.

MINEX-041-01

• The stacked materials and equipment should be easily accessible and have a comfortable working area.

MINEX-042-01

SAFETY RULES

• Do not enter the machine during work.

• Ensure that there are no obstacles in front of the machine when it is in motion. The drill machine should not be driven and the drill should not be used until the machine and the drill are in a safe position and there is a safe, clear path.

• If you have any doubts or questions, ask your supervisor.

• Do not use the machine and the drill in a way that is not intended for use. The machine and the drill are designed for use in a safe and secure manner.

MINEX-043-01

• Barbed and liquid chemicals used in mining operations should be stored in a sturdy manner without violating the work area.

MINEX-044-01

• The stacked materials and equipment should be easily accessible and have a comfortable working area.

MINEX-045-01

• The stacked materials and equipment should be easily accessible and have a comfortable working area.

MINEX-046-01

• The stacked materials and equipment should be easily accessible and have a comfortable working area.

MINEX-047-01

• The stacked materials and equipment should be easily accessible and have a comfortable working area.

MINEX-048-01

• The stacked materials and equipment should be easily accessible and have a comfortable working area.

MINEX-049-01

SAFETY RULES

• Do not enter the machine during work.

• Ensure that there are no obstacles in front of the machine when it is in motion. The drill machine should not be driven and the drill should not be used until the machine and the drill are in a safe position and there is a safe, clear path.

• If you have any doubts or questions, ask your supervisor.

• Do not use the machine and the drill in a way that is not intended for use. The machine and the drill are designed for use in a safe and secure manner.

MINEX-050-01

• Barbed and liquid chemicals used in mining operations should be stored in a sturdy manner without violating the work area.

MINEX-051-01

• The stacked materials and equipment should be easily accessible and have a comfortable working area.

MINEX-052-01

• The stacked materials and equipment should be easily accessible and have a comfortable working area.

MINEX-053-01

• The stacked materials and equipment should be easily accessible and have a comfortable working area.

MINEX-054-01

• The stacked materials and equipment should be easily accessible and have a comfortable working area.

MINEX-055-01

• The stacked materials and equipment should be easily accessible and have a comfortable working area.

MINEX-056-01

SAFETY RULES

• Do not enter the machine during work.

• Ensure that there are no obstacles in front of the machine when it is in motion. The drill machine should not be driven and the drill should not be used until the machine and the drill are in a safe position and there is a safe, clear path.

• If you have any doubts or questions, ask your supervisor.

• Do not use the machine and the drill in a way that is not intended for use. The machine and the drill are designed for use in a safe and secure manner.

MINEX-057-01

• Barbed and liquid chemicals used in mining operations should be stored in a sturdy manner without violating the work area.

MINEX-058-01

• The stacked materials and equipment should be easily accessible and have a comfortable working area.

MINEX-059-01

• The stacked materials and equipment should be easily accessible and have a comfortable working area.

MINEX-060-01

• The stacked materials and equipment should be easily accessible and have a comfortable working area.

MINEX-061-01

• The stacked materials and equipment should be easily accessible and have a comfortable working area.

MINEX-062-01

• The stacked materials and equipment should be easily accessible and have a comfortable working area.

MINEX-063-01

THINGS TO CONSIDER IN DRILLING OPERATIONS HANDBOOK

Minex Drill Company has adopted the principle of providing a safe working environment, identifying the risks that may endanger the project and employees in advance, and taking all measures and being prepared for the possibility of any emergency.

MINEX
DRILL



RC DRILLING
MULTIPURPOSE

IN PURSUIT
OF THE ORE

Two hundred and fifty thousand meters of core and RC drilling per year, both national and international



year 1991

MINEX

DRILL

📍 Ostim OSB Mah. 1125/2. Sokak No: 10 Yenimahalle, Ankara-TÜRKİYE



+90 312 354 77 71



+90 501 103 06 18



minex@minexdrill.com

www.minexdrill.com